

Boston Manor Park, Hounslow, West London

Scope

In the shadow of the raised section of the M4 and the GlaxoSmithKline UK headquarters, the entrance pathways in Boston Manor Park were to be resurfaced to match the other pathways in the park.

Product

250sqm Resin bonded gravel with 1-3mm Rounded Sepia

Client

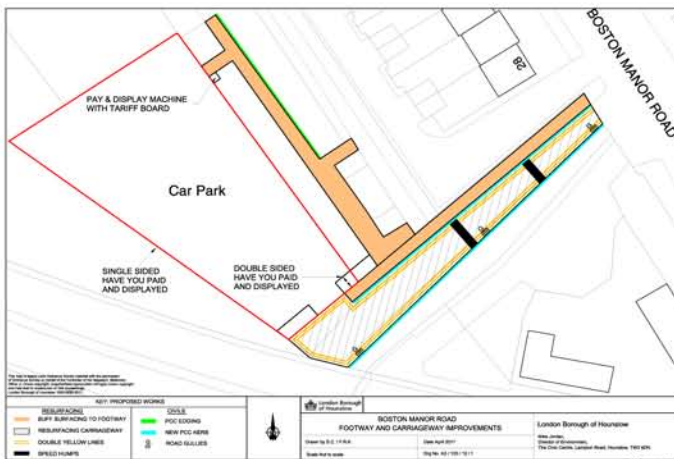
Hounslow Borough Council

Principal Contractor

Eurovia Ringway Group

Completed

Summer 2011



Gravel laid out at intervals to enable the path to be completed in one.



The area around the changing rooms was masked off and surfaced once the main pathway was cured.



Resin is spread over the sub-base with and the gravel is scattered on top.



The completed pathway.



The new pathway connecting to the existing pathway.

Further information

Please contact us on 01227 750 875 or visit www.oakleighmanor.co.uk/resin

Oakleigh Manor Ltd
The Landscape Design Centre
Dargate, Kent
ME13 9HB

Epping Forrest, North London

Scope

After removing the existing driveway surface, our team renovated the surrounding paving, edging and installed additional drainage. The area was then resurfaced with resin bound gravel, completing the new entrance for this grand property.

Product

700sqm resin bound gravel with Harvest Crunch

Client

Domestic client

Principal Contractor

Oakleigh Manor Limited

Completed

Spring 2011



Further information

Please contact us on 01227 750 875 or visit www.oakleighmanor.co.uk/resin

Oakleigh Manor Ltd
The Landscape Design Centre
Dargate, Kent
ME13 9HB

